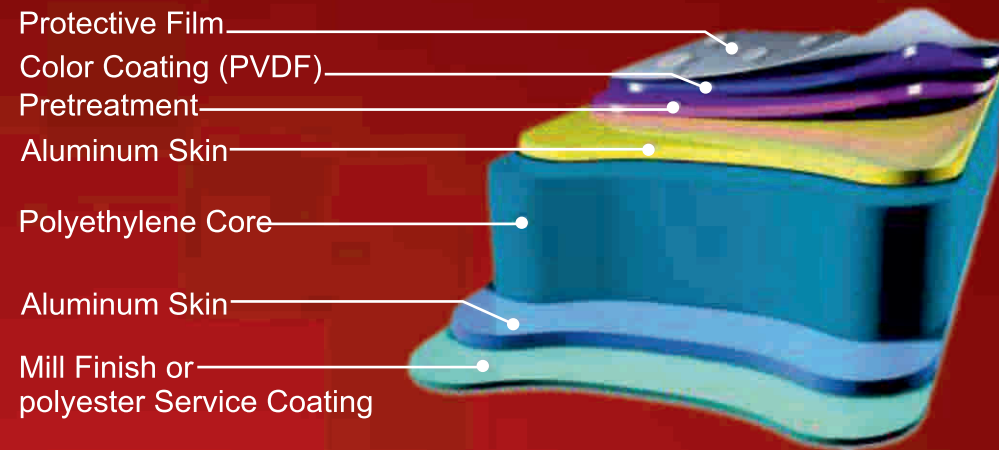




## ACP cross Section



PANEL DIMENSIONS	
Standard Sizes	
1220 mm x 3660 mm	
1220 mm x 3050 mm	
1220 mm x 2440 mm	
Panel	
Thickness Skin	
4 mm	0.50mm
4 mm	0.25mm
3 mm	0.25mm
COATING PVDF/PE	

PANEL OPTIONS	
LENGTH	Upon Request
WIDTH	915 mm, 1220 mm, 1550 mm, (On order)
PANEL THICKNESS	1 mm to 6 mm
SKIN THICKNESS	0.10 mm, 0.25 mm, 0.50 mm

Custom Colors & grades can be produced on demand

PARTITION SHEETS	
Standard Sizes	
1220 mm x 3660 mm	
1220 mm x 3050 mm	
1220 mm x 2440 mm	
915mm Width Available	
PANEL THICKNESS	3 mm to 8 mm

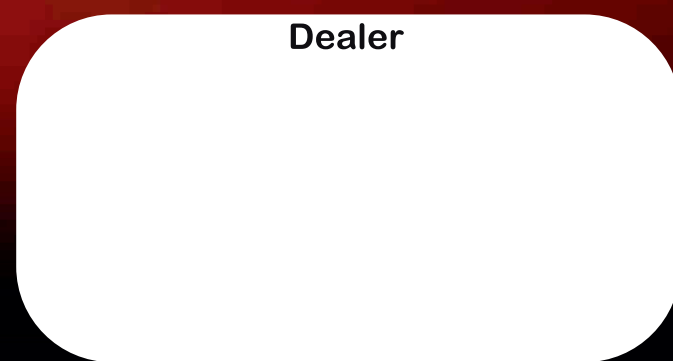
**Works**  
 Village Timbhi, Survey No. 68/7/1, Timbhi,  
 Near Varoli River, Next To Bhalaria Steel,  
 Sanjan Bhilad Road, Taluka Umbergaon ,  
 Dist. Valsad - 396170, Gujarat, India  
 Phone:+(91)-(22)-28710137

**Branch Office cum Godown**  
 11/7, Buta Singh Complex, Faridabad - 121002

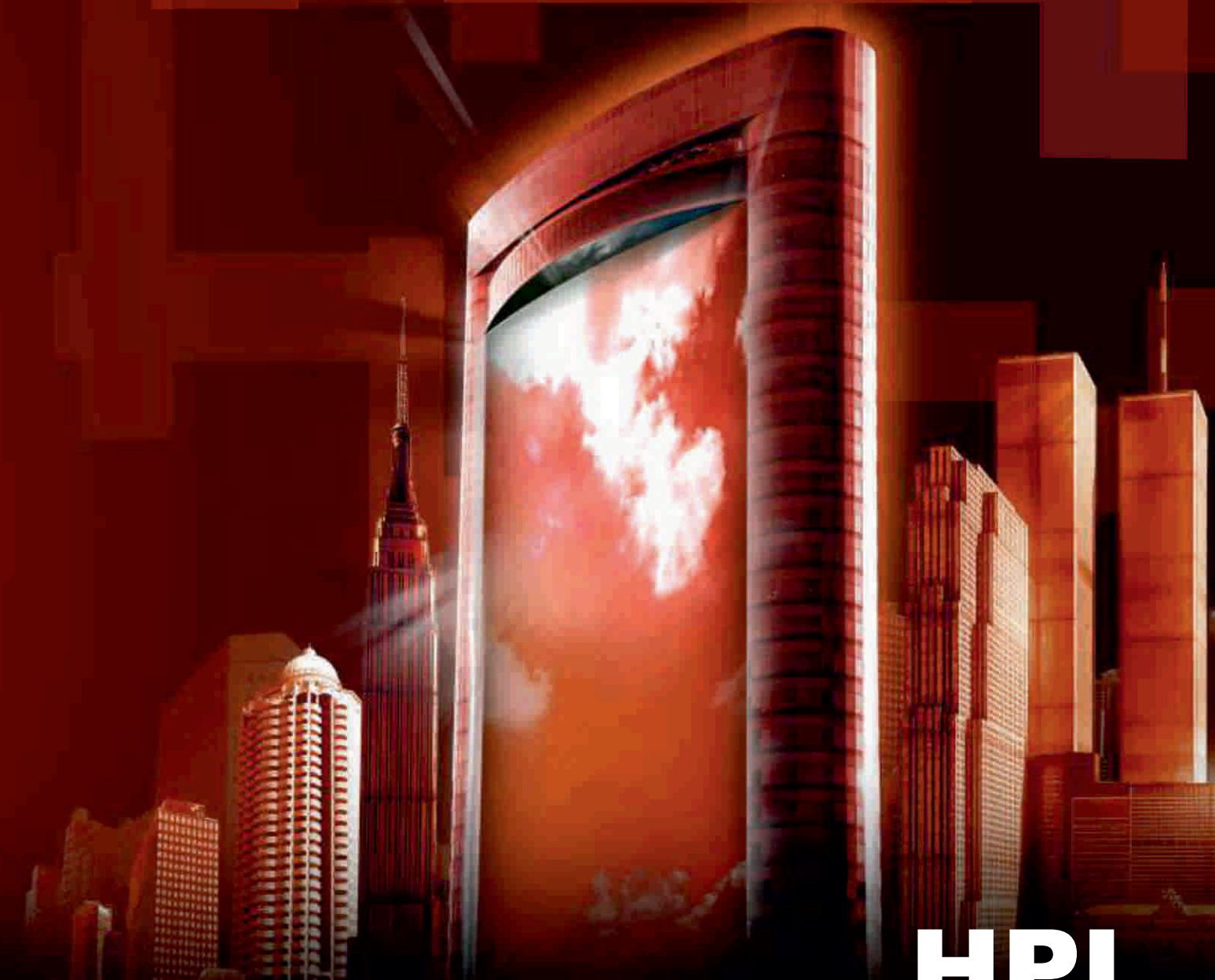
**Head Office**  
 Plot No. 3, Bharat Compound, Opp. Pravasi Ind. Est.,  
 Mulund Goregaon link road Goregaon (E.) Mumbai - 400063  
 Phone : 022-2871 0137 / 38

**Branch Office**  
 3054 Gali No.1, Chuna Mandi, Pahar Ganj, New Delhi - 110055  
 Phone : 9310690204

Website : [www.primebondindia.com](http://www.primebondindia.com)  
 Email : [primeacpdelhi@gmail.com](mailto:primeacpdelhi@gmail.com)



# Aesthetics for Landmarks



**HPL**  
 NATURAL CLADS | LOUVERS

[www.primebondindia.com](http://www.primebondindia.com)

# FR GRADE ALUMINIUM PANEL

PRIMEBOND fr is a metal composite panel consisting of two layers of Aluminium skin, sandwiching a fire rated environment green core in a continuous co-extrusion process. PRIMEBOND fr is committed to a sustainable future and is now available in three fire rated cores A2, B1 & B2. PRIMEBOND RETRO a signage master application product available on request.



ENVIROMENT FRIENDLY



UNBREAKABLE



FIRE PROTECTION



FR GRADE ACP

REGULAR ACP

RAPID FIRE SPREAD

Fire Spreads upwards due to a **COMBUSTIBLE CLADDING**



FR ACP

RESTRICTED FIRE SPREAD

Fire Spread is restricted due to a **FIRE RETARDANT CLADDING** material and system



## COMPANY PROFILE

PRIME BOND established in the year 2005. In the past 17yrs PRIME BOND has been recognized as one of the pioneer's in the industry and has successfully retained its position as a leading player because of its impeccable ACP product quality and immense customer - satisfaction.

PRIME BOND has a state-of-the-art manufacturing plant located in Umargaon in Gujarat. It is equipped with two technologically advanced manufacturing lines and a state of the Art Testing laboratory which boasts of the latest instruments and equipments for Quality check, where continuous batch wise random test are conducted both for raw material as well as ACP. This is to ensure the final product meets the required international quality standards. Thus Prime Bond is highly durable and reliable. Hence it is the most preferred Brand by leading architects, Corporate, PMCs, Interior Designers, Builders ,Interiors, Fabricators and others. PRIME BOND team is also engaged in pro-active Research and Development initiatives to ensure that each product is continuously evolved to meet the emergent needs of its customers.

### OUR VISION

Prime Bond comes with the vision of establishment as a world class supplier of industrial solutions in terms of quality aluminum composite panels for the whole of the industry. We also very successfully satisfy the specific needs of our clientele through value based operations and customized post-sales services. The engineers from the house of Prime Bond come to be highly qualified for all sorts of sophisticated operations that take place under the single roof of our research and development programs center.

### OUR TEAM

The team at Prime Bond comprises of workers and professionals who have an in-depth understanding of the functioning of the industry. We also make use of world-class advanced machinery that could allow for the industrial perfection into our line-up. Our team comes highly dedicated towards the application of the high-end state of the art technology into our whole line-up.

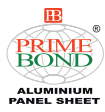
### Capacity, Technology and Quality Control

PRIME BOND, with its two ACP manufacturing lines, has an installed capacity of 2 million square meter of ACP per year. The manufacturing plant has superior production technology that provides excellent homogeneity to the core. The manufacturing line is based on hot catalytic fusion mechanism which employs eight-stage rollers for online lamination and gives PRIME BOND ACP a competitive edge.

The adhesive film used for lamination is made with a process using full blown technology, hence the adhesive film ensures superior bonding at any given Sq mm, The pre-coated coils are coated with (Kynar 500) based PVDF paint and the core is LDPE.

The product is tested for durability, shade quality, tensile strength, weather proofing, flatness and smoothness.





Also available in :-

★ 6mm - HPL Series

★ 0.25mm Skin Thickness

### NEW CORTEN SERIES



PB 3040 ★★ LAVA ROCK



PB 3041 ★★ GRAPHITE STONE



PB 3042 ★★ ALASKA STONE



Also available in :-

★ 0.25mm Skin Thickness



### NEW RUGGED SERIES



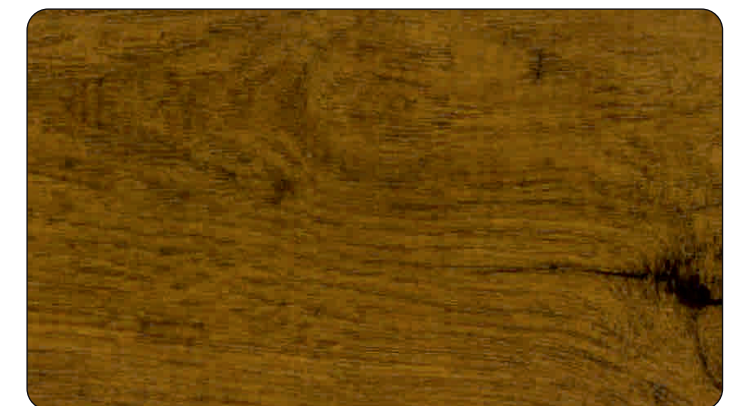
PB 4040 ★★ RUGGED COPPER



PB 4041 ★★ RUGGED ANTIQ

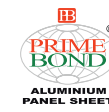


PB 4042 ★★ RUGGED FOSSIL



PB 4043 ★★ RUGGED OAK





Also available in :-

★ 6mm - HPL Series

★ 0.25mm Skin Thickness

### NEW SAND SERIES



PB 5001 ★ DARK GREY SAND

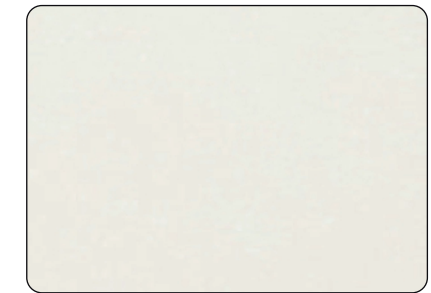


PB 5002 ★ CEMENT

### SPARKLE SERIES

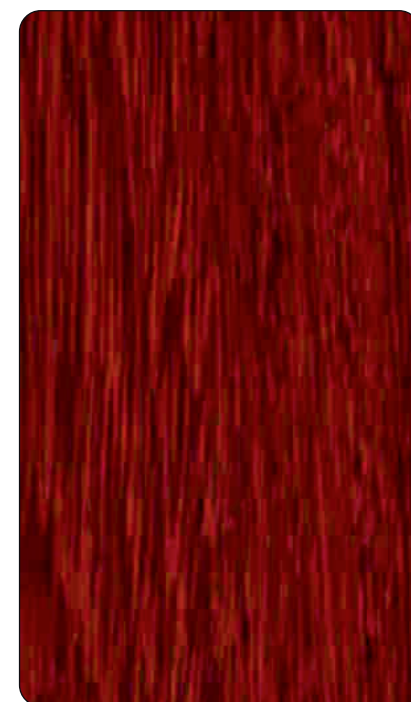


PB 3004 ★ STAR GALAXY GRANITE

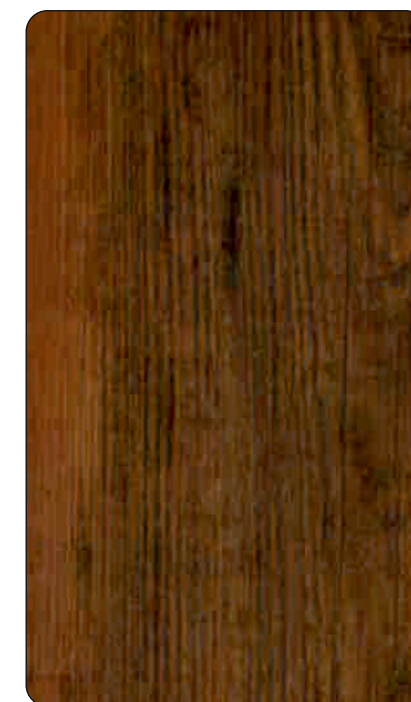


PB 3013 ★ WHITE GRANITE

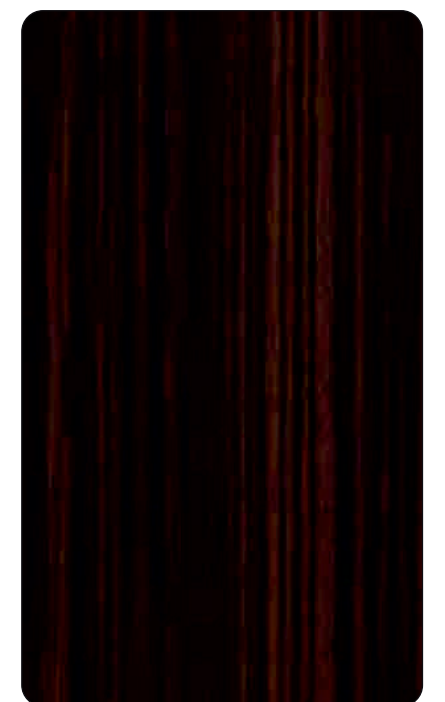
### WOODEN SERIES



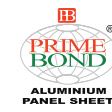
PB 3007 ★★ ROSE WOOD



PB 3011★ MAOBI



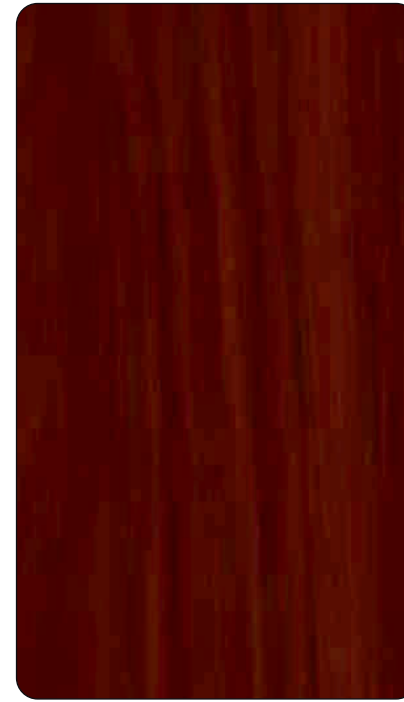
PB 3017 ★★ TINEO



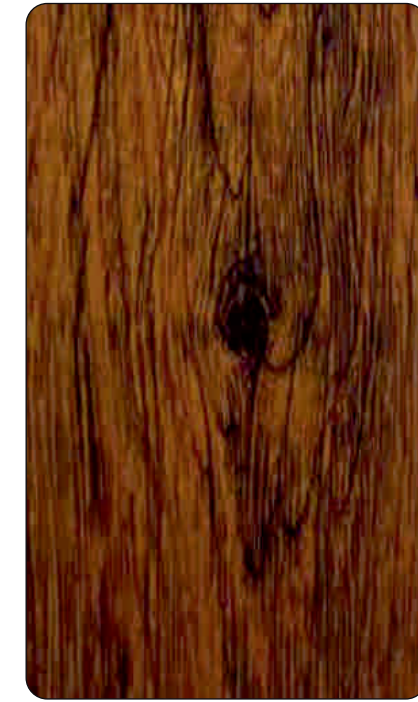
Also available in :-

★ 6mm - HPL Series

★ 0.25mm Skin Thickness



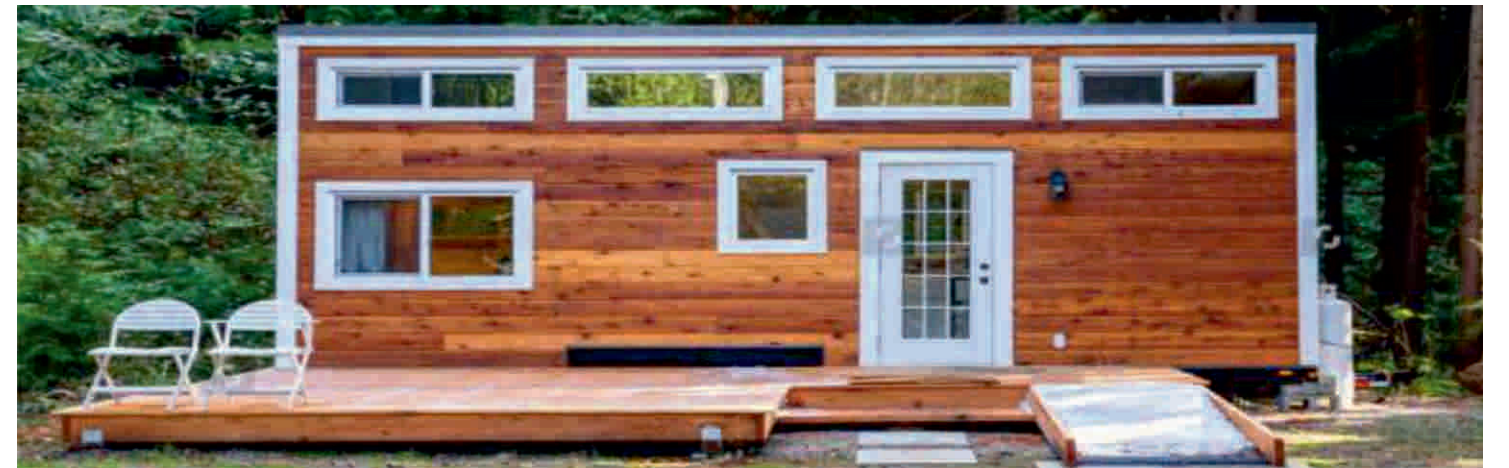
PB 3018 ★★ MAPLE BROWN



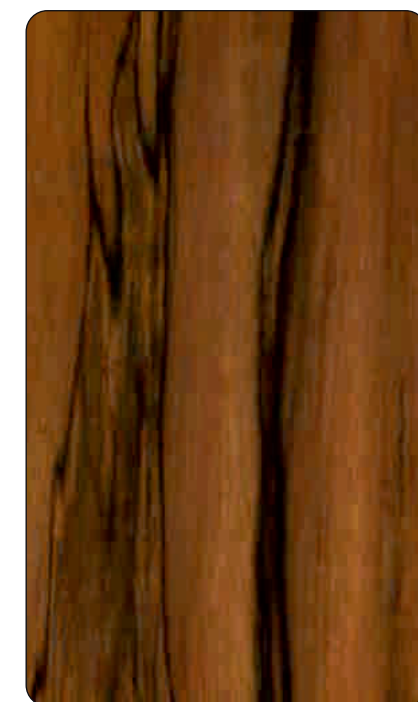
PB 3021★★ RUSTIC WOOD



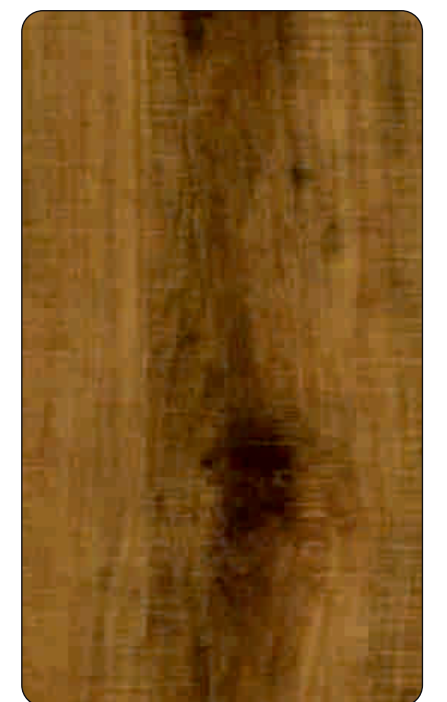
PB 3026 ★★ BROWN TEAK



PB 3029 ★★ ALMARAHA WOOD



PB 3030★★ NOVA TEAK



PB 3033 ★★ ENGLISH OAK



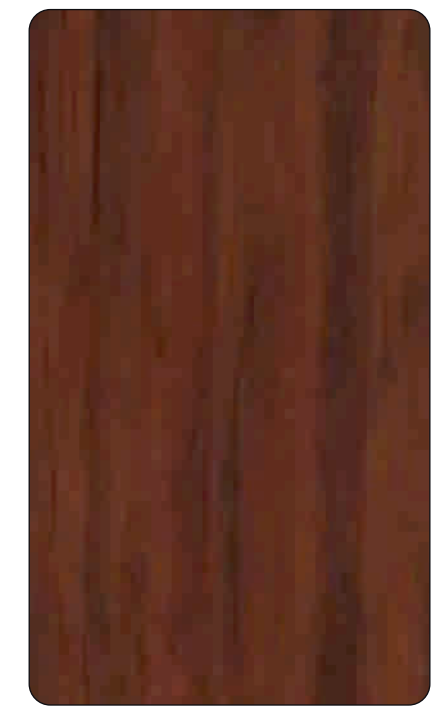
Also available in :-

★ 6mm - HPL Series

★ 0.25mm Skin Thickness



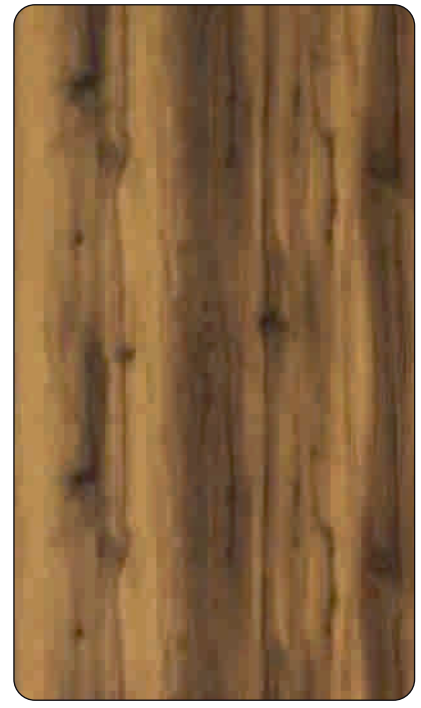
PB 3034 ★★ ROYAL TEAK



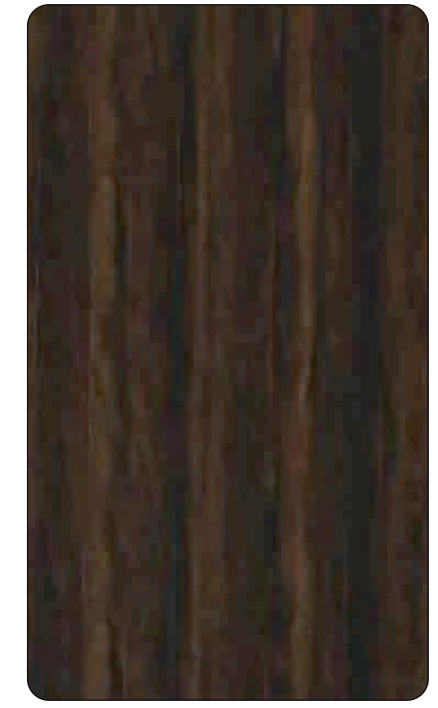
PB 3035★ MAHAGHONY



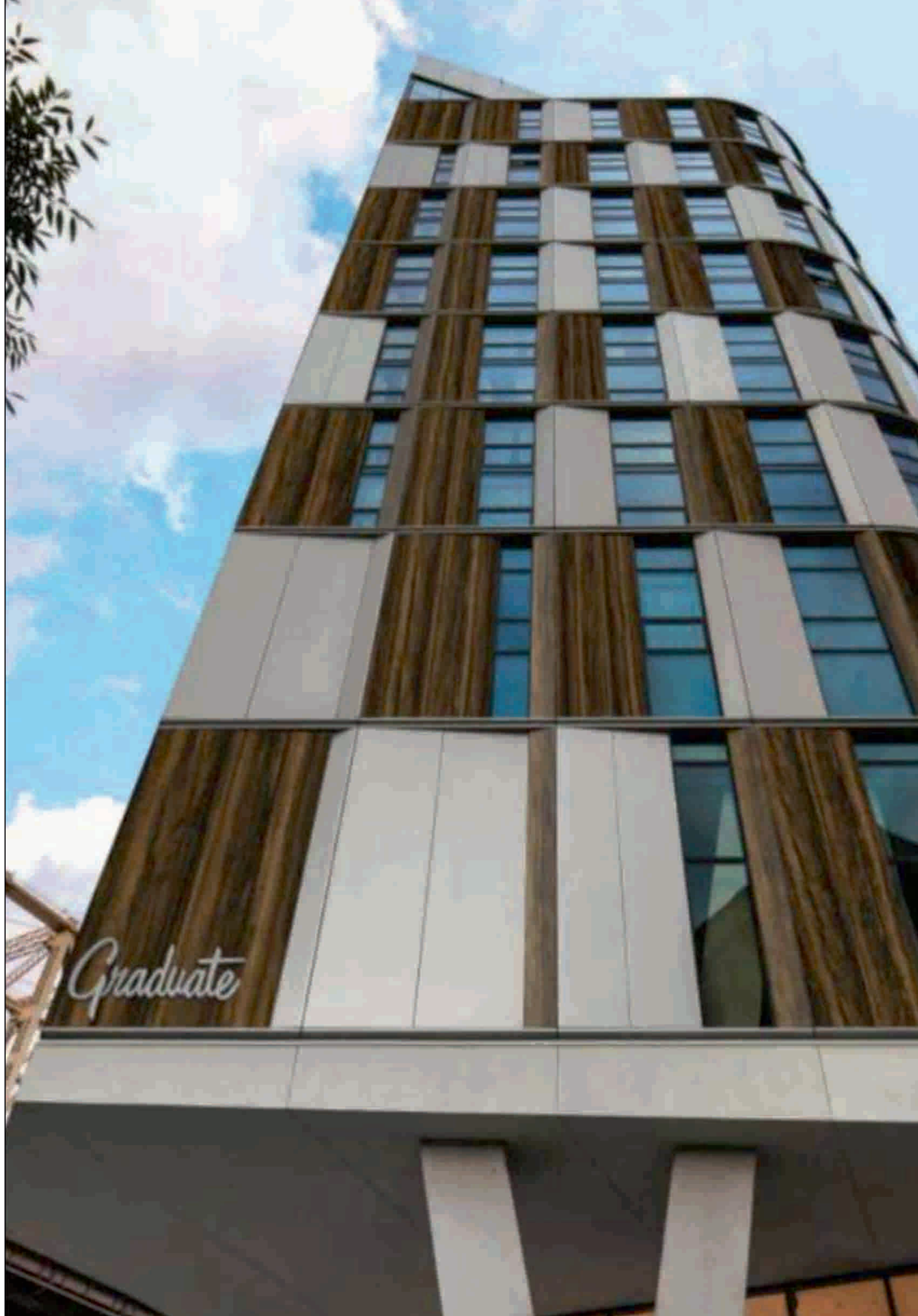
PB 3036 ★★ AMAZONIAN FOREST



PB 3038 ★★ ACACIA WOOD



PB 3043★ AFRICAN TEAK

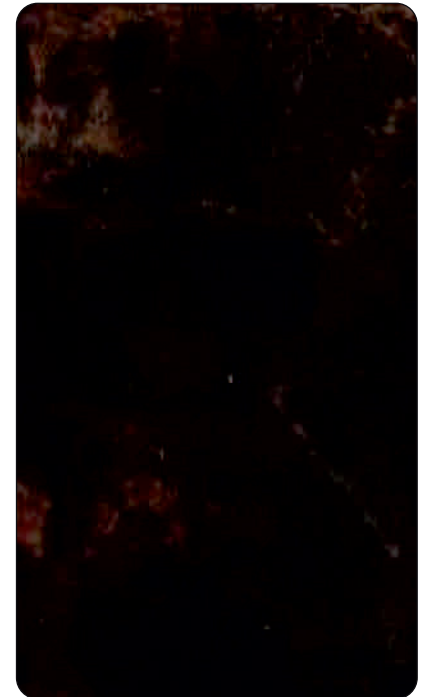


Also available in :-

★ 6mm - HPL Series

★ 0.25mm Skin Thickness

**MARBLE SERIES**



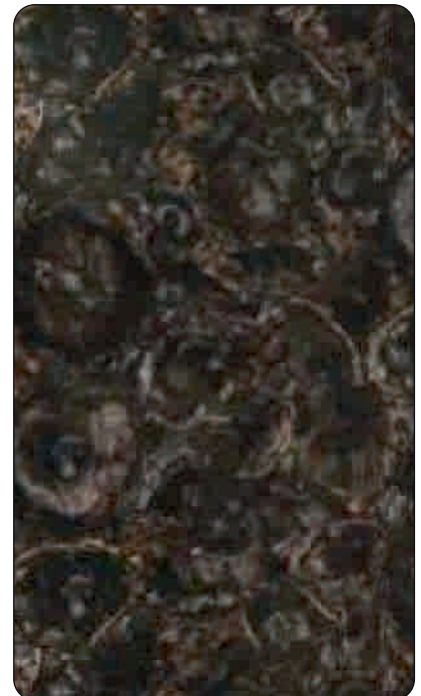
PB 3005 ★★ CLASSIC ONYX



PB 3012 ★ ITALIAN WHITE



PB 3020 ★★ INDIAN KATNI



PB 3027 ★★ BROWN FIRE

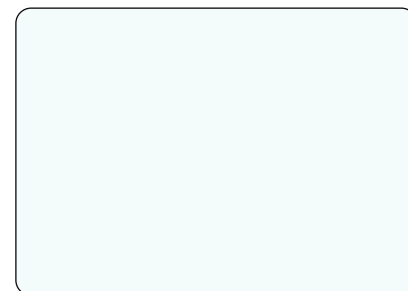


PB 3039★★ BLACK GALAXY

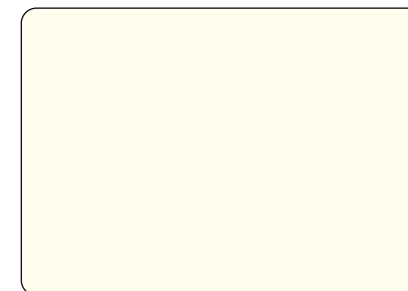


Also available in :-

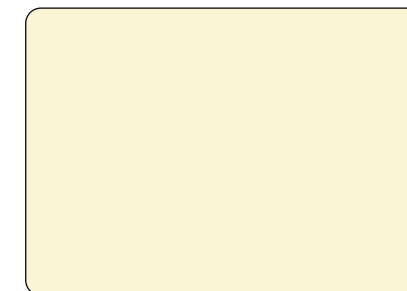
★ 0.50mm Skin Thickness   ★ 0.25mm Skin Thickness   ★ 0.15mm Skin Thickness   ★ 0.25mm (5-Feet)



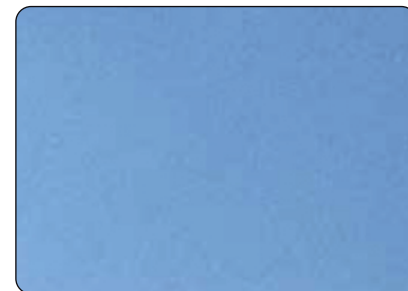
PB 2005 ★★☆☆ PURE WHITE



PB 2007 ★★☆☆ IVORY WHITE



PB 2015 ★ BEACH WHITE



PB 1006 ★★ METALLIC BLUE



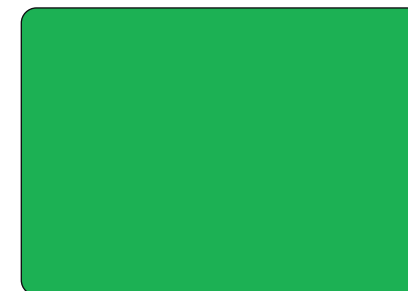
PB 2003 ★★ ROYAL BLUE



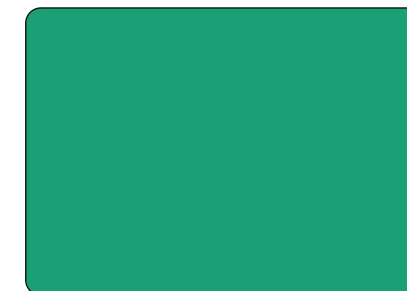
PB 2006 ★★ NAVY BLUE



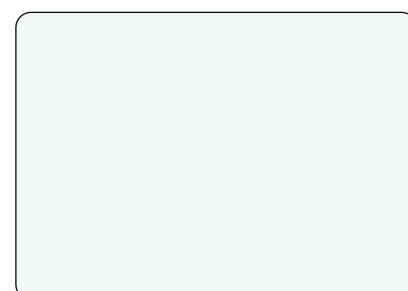
PB 2012 ★★ EMERALD GREEN



PB 2022 ★★ OPPO GREEN



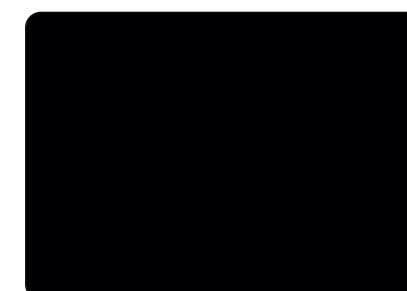
PB 2013 ★★ PARROT GREEN



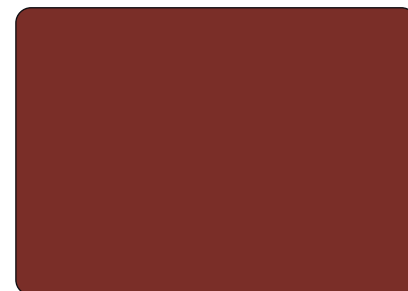
PB 2019 ★★☆☆ GLOSSY WHITE



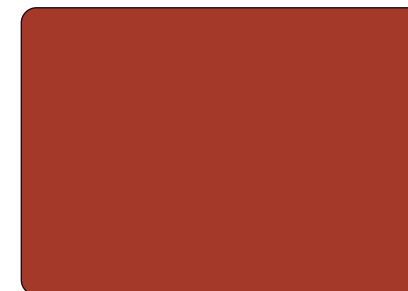
PB 2020 ★★☆☆ GLOSSY RED



PB 2021 ★★ GLOSSY BLACK



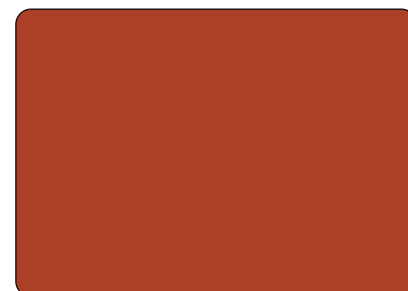
PB 2014 ★★ CHOCO



PB 2023 ★★ COFFEE SILVER



PB 1008 ★★☆☆ METALLIC COPPER



PB 1013 ★ METALLIC WINE

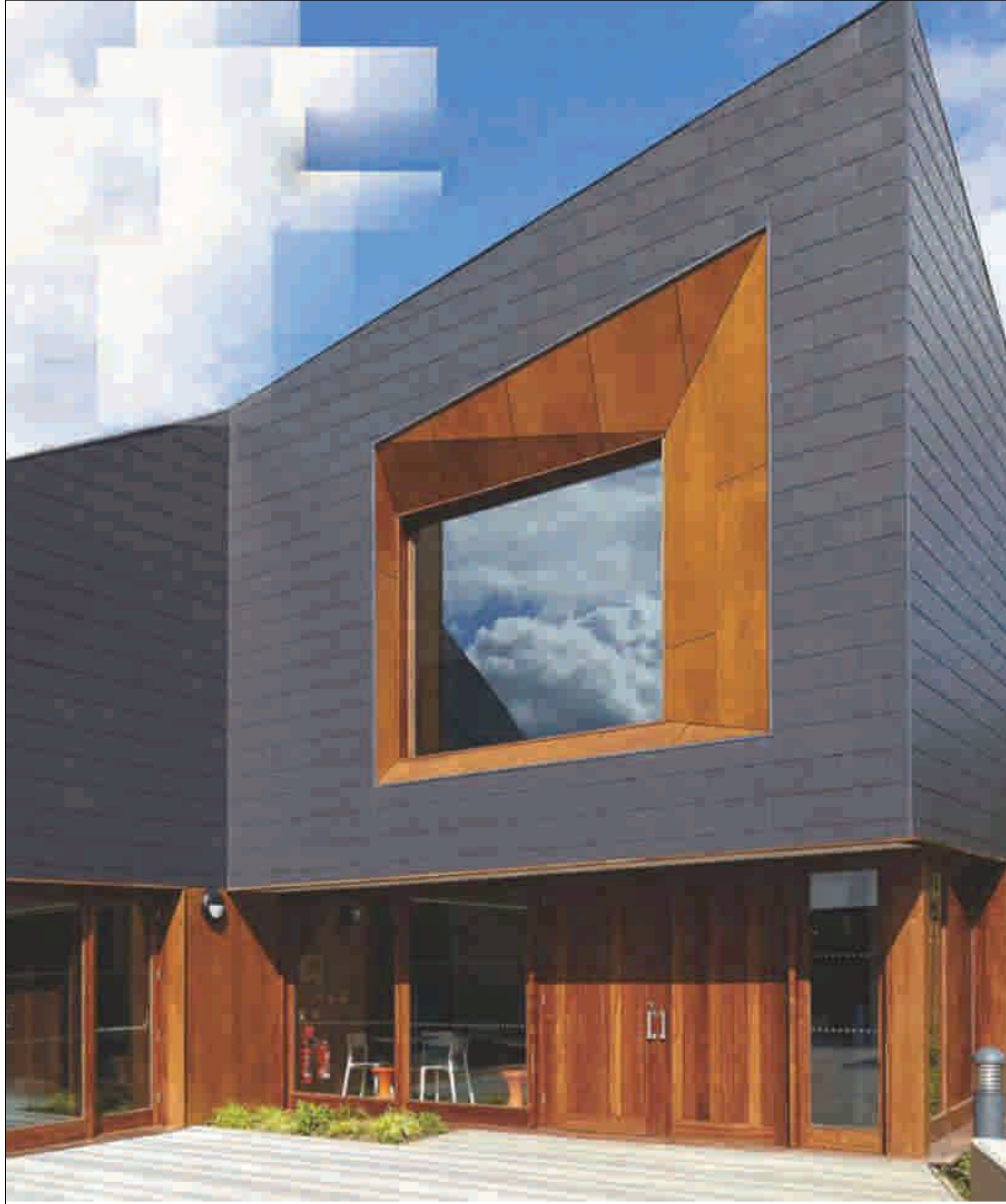


PB 1011 ★★☆☆ M D GRAY



PB 2016 ★★ SLATE GRAY





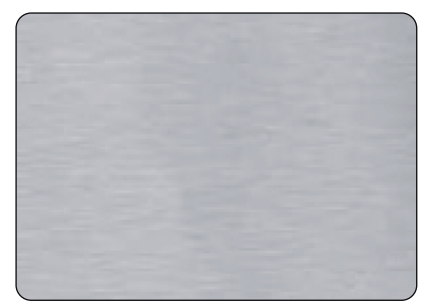
Also available in :-

★ 0.50mm Skin Thickness

★ 0.25mm Skin Thickness

★ 0.15mm Skin Thickness

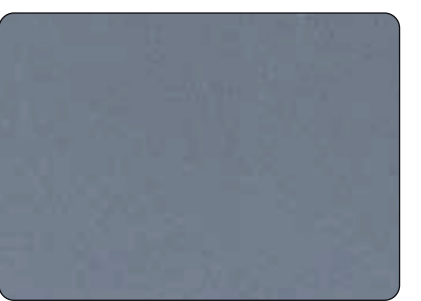
★ 0.25mm (5-Feet)



PB 3003 ★★ BUTLER SILVER



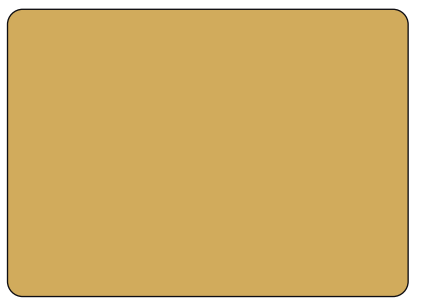
PB 1001 ★★ BRIGHT SILVER



PB 1002 ★★ METALLIC GRAY SILVER



PB 3001 ★★ BUTLER GOLD



PB 3022 ★★ MIRROR GOLD



PB 1009 ★★ METALLIC GOLD



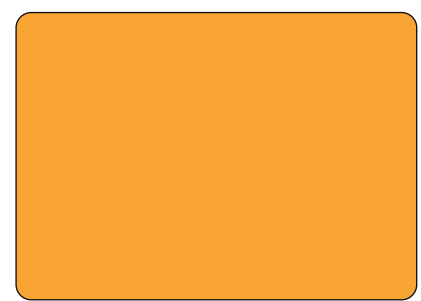
PB 1010 ★★ COPPER GOLD



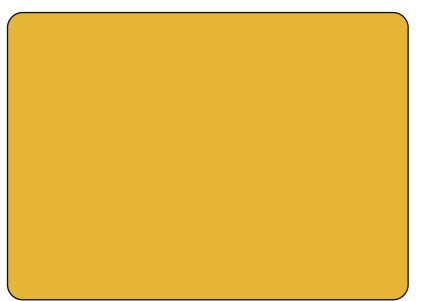
PB 3002 ★★ MIRROR FINISH



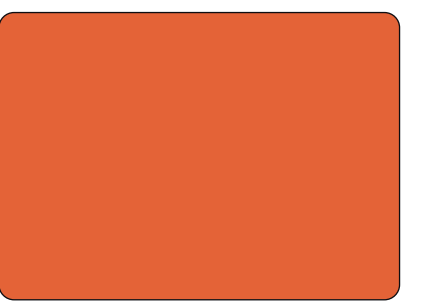
PB 1005 ★★ M J GREEN



PB 2010 ★★ TRAFFIC YELLOW



PB 2009 ★★ LEMON YELLOW



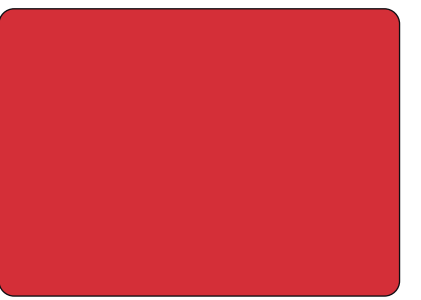
PB 2008 ★★ ORANGE



PB 1012 ★ BURGUNDY



PB 2004 ★★ PEARL BLACK



PB 2002 ★★ SIGNAL RED



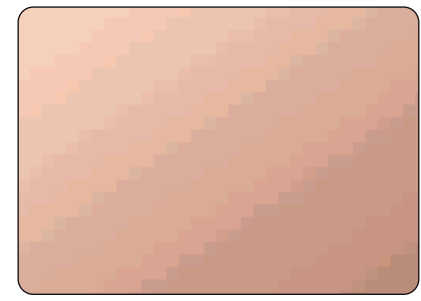
PB 1007 ★ METALLIC BRONZE



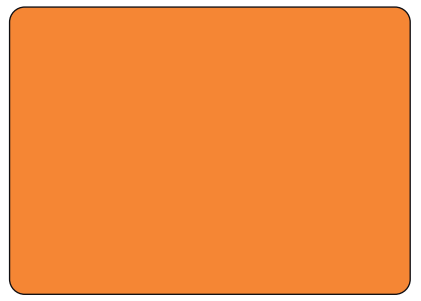
PB 1004 ★★ CHAMPAGNE GOLD



PB 1003 ★★ CHAMPAGNE SILVER



PB 3037 ★ COPPER MIRROR



PB 2024 ★ GLOSSY ORANGE



PB 2018 ★ REFRESHING GREEN

# OUR PRESTIGIOUS CLIENTS



# Certification



Prof. A. S. KHANNA  
FACULTY, PAST

Corrosion Science & Engineering  
Dep. of Mat. Eng. & Mater. Science  
Indian Institute of Technology Bombay  
Powai, Mumbai-400 075, India  
Tel: (91-22) 25727000, 25727001 (R)  
Fax: (91-22) 25723440  
E-mail: a.khanna@iitb.ac.in  
Chairman - SSPG India Chapter

IIT Bombay

M/s Prime Bond Industries,  
7, Hirakunj, Building,  
Aurey Road,  
Goregaon ( East),  
Mumbai - 400 063

April 9, 2007

Ref: Your letter dtd. Feb. 2, 2007

Our Job No. : DRD/CN/ASK-47/06-07

Subj: Test Evaluation of ACP Sheet Samples

Dear Sir,

Enclosed, please find the test report on the evaluation of 4mm ACP panels, colour - Silver Grey, tested in our laboratory.

*A.S. Khanna*  
A.S. Khanna

Sr. No.	TEST	UNIT	ASTM Standard	4mm (Blue)
<b>Physical Properties of Composite</b>				
1.	Panel weight	kg/m <sup>2</sup>		5.493
2.	ACP thickness	mm		4.0
3.	Density	gm/cm <sup>3</sup>		1.389
<b>Mechanical Properties of Aluminum Composite Panel</b>				
4.	Tensile strength	N/mm <sup>2</sup>	D 638	41.27
5.	Yield strength	N/mm <sup>2</sup>	D 638	34.6
6.	Elongation	%	D 638	4.7
7.	Flexural strength	N/mm <sup>2</sup>	D 790	112.04
8.	Peel strength	N/mm	D 908	7.01
9.	Punch Shear Strength	N/mm <sup>2</sup>	D 732	26.09
<b>Mechanical Properties of Aluminum Skin</b>				
10.	Tensile strength	N/mm <sup>2</sup>	E 8	141.05
11.	Yield strength	N/mm <sup>2</sup>	E 8	113.52
12.	Elongation	%	E 8	6.2
13.	Al Skin thickness	mm		0.5

### Properties of Coatings

14.	Coating Type		Chemical Test	PVDF
15.	Coating thickness	µm	Elcometer	28
16.	Taber abrasion	mg loss per 1000 cycles	D 4060	6.0
17.	Pencil Hardness			4H
18.	Initial Gloss		D 523	20
19.	Gloss Retention (500h)	%	D 523	98.1
20.	Colour Retention (500h)	ΔE	D 2244	1.04
21.	Chalking (500h)	Visual		No Chalking Observed
22.	Salt Spray (500h)	Visual	D 117	Pass
23.	Humidity (500h)	Visual	D 2247	Pass
24.	Immersion Tests			
	1. 10% HCl	Visual		Pass
	2. 10% NaOH			Pass
	3. Detergent			Pass

Test results conform to the samples submitted to us.

*A.S. Khanna*  
A.S. Khanna

Prof. A. S. KHANNA  
Corrosion Science & Engineering  
IIT, POWAI  
Powai, Mumbai - 400 075.

*A.S. Khanna*